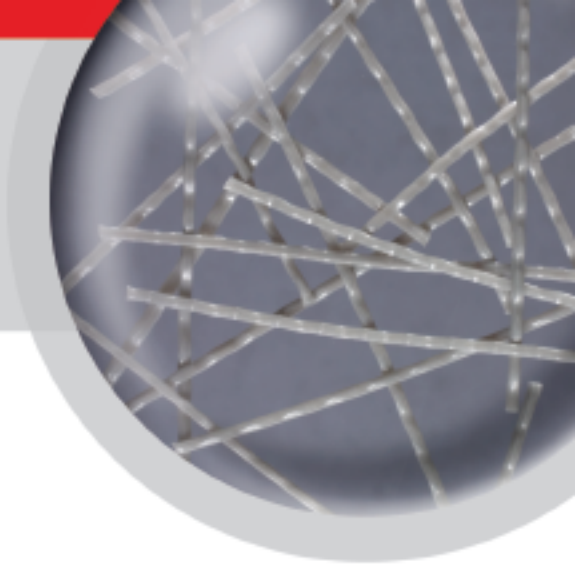


ENDURO® 600

PRODUCT DATA SHEET



ENDURO® 600 MACRO-SYNTHETIC FIBER

ENDURO 600 is the latest high performance macro-synthetic fiber developed from the innovative HPP technology which was pioneered and patented by Propex Concrete Systems. ENDURO 600 has been specifically designed to satisfy the demanding requirements of modern day shotcrete reinforcement and equipment.

FEATURES & BENEFITS

- Geometrically engineered to resist matrix pullout
- Increases flexural toughness
- Reduces rebound
- Increases cohesion and reduces segregation
- Increases impact and shatter resistance
- Non-magnetic
- Rustproof
- Chemically inert and alkali proof
- Reduced wear on concrete pumps and hoses
- Safe and easy to handle
- Simplified logistics
- Economical alternative to steel wire mesh and/or steel fibers

PRIMARY APPLICATIONS

- Ground support and stabilization
- Marine structure repair and rehabilitation
- Retaining walls and soil nailing
- Lining large underground cavities
- Aqueduct rehabilitation
- Mining
- Structural rehabilitation
- Seismic retrofits
- Channel linings
- Slope stabilization
- Pools
- Tanks

COMPLIANCE

Complies with ASTM C III6 Type III 4.1.3

CHEMICAL AND PHYSICAL PROPERTIES:

Absorption	Nil	Melt Point	328°F (164°C)
Specific Gravity	0.91	Ignition Point	1022°F (>550°C)
Fiber Length	2.0 in (50 mm)	Thermal Conductivity	Low
Electrical Conductivity	Low	Alkali Resistance	Alkali Proof
Acid & Salt Resistance	High		

DO SPECIFY ENDURO 600 FIBERS:

- Reduced plastic shrinkage cracking
- Alternative to traditional reinforcement
- Improved impact, shatter and abrasion resistance
- Improved residual strength
- Reduced water migration and damage from freeze/thaw
- Improved durability
- Areas requiring non-metallic materials

DO NOT SPECIFY ENDURO 600 FIBERS:

- Replacing any moment or structural steel

ENDURO® 600

PRODUCT USE

MIXING DESIGNS AND PROCEDURES: The specified dosage per cubic meter should be added to the mixer after batching the other concrete materials. After the addition of the fibers, the concrete should be mixed for sufficient time (minimum 5 minutes) to ensure uniform distribution of the fibers throughout the concrete mix. ENDURO® 600 macro-synthetic polypropylene fibers can be pumped, shot or placed using conventional equipment as with other fibrous concrete.

FINISHING: Conventional techniques and equipment can be used when finishing ENDURO 600 fiber concrete.

APPLICATION RATE: The application rate for ENDURO 600 macro-synthetic fibers will vary depending on the application, mix design and the toughness requirements of each particular project. Typically, ENDURO 600 macro-synthetic fibers dosage will be in the range of 8 lbs to 15 lbs per cubic yard (5 kgs to 9 kgs per cubic meter) of concrete. When used in conjunction with Fibermesh® 150 fibers the dosage rate and the performance of the sprayed concrete can be optimized economically. Propex Concrete Systems technical staff can offer advice on dosage requirements once performance requirements have been established by the project designer/engineer.

COMPATIBILITY

ENDURO 600 macro-synthetic fibers are compatible with all curing compounds, superplasticizers, water reducers, hardeners and coatings.

SAFETY

No special handling is required with ENDURO 600 macro-synthetic fibers. Full Material Safety Data Sheets are available on request.

PACKAGING

ENDURO 600 macro-synthetic fibers are collated in degradable paper wrapped bundles or pucks to aid rapid dispersion and mixing. The fiber bundles are packaged in 7 kg cartons. Store materials in a cool dry place. Do not store in direct sunlight.

TECHNICAL SERVICES

Propex Concrete Systems is backed by our team of reinforced concrete specialists who can carefully analyze each project and provide fiber reinforced concrete design solutions to ensure maximum project performance and cost efficiency.

REFERENCES

- ASTM C 1436 Standard Specification for Materials for Shotcrete.
- ASTM C 1116 Standard Specification for Fiber-Reinforced Concrete and Shotcrete.
- ASTM C 1550 Standard Test Method for Flexural Toughness of Fiber Reinforced Concrete (Using Centrally Loaded Round Panel).
- ACI 304 Guide for Measuring, Mixing, Transporting and Placing Concrete.
- ACI 506 Guide for Shotcrete.

SPECIFICATION CLAUSE

Fibers for concrete shall be ENDURO 600 polypropylene/polyethylene high performance macro-monofilament fiber and manufactured specifically for the reinforcement of concrete. ENDURO 600 macro-synthetic fibers shall be mixed at the batch plant, at the recommended rate ofkgs/m³, and mixed for sufficient time (minimum 5 minutes) to ensure uniform distribution of the fibers throughout the concrete mix. Fibrous concrete reinforcement shall be manufactured by Propex Concrete Systems, 6025 Lee Highway, Suite 425, PO Box 22788, Chattanooga, TN, 37422, USA, tel: 423 892 8080, fax: 423 892 0157, web site: fibermesh.com.

PROPEX
CONCRETE SYSTEMS

THE ADVANTAGE CREATORS.™

NORTH AMERICA

Propex Concrete Systems Corp.
6025 Lee Highway, Suite 425
PO Box 22788
Chattanooga, TN 37422
Tel: 800 621 1273
Tel: 423 892 8080
Fax: 423 892 0157

INTERNATIONAL

Propex Concrete Systems Ltd.
Propex House, 9 Royal Court, Basil Close
Chesterfield, Derbyshire, S41 7SL.UK
Tel: +44 (0) 1246 564200
Fax: +44 (0) 1246 465201

www.fibermesh.com

Fibermesh®, Novomesh®, Novocon®, ENDURO® and e3® are registered trademarks of Propex Concrete Systems Corp.

THIS PUBLICATION SHOULD NOT BE CONSTRUED AS ENGINEERING ADVICE. WHILE INFORMATION CONTAINED IN THIS PUBLICATION IS ACCURATE TO THE BEST OF OUR KNOWLEDGE, PROPEX DOES NOT WARRANT ITS ACCURACY OR COMPLETENESS. THE ULTIMATE CUSTOMER AND USER OF THE PRODUCTS SHOULD ASSUME SOLE RESPONSIBILITY FOR THE FINAL DETERMINATION OF THE SUITABILITY OF THE INFORMATION AND THE PRODUCTS FOR THE CONTEMPLATED AND ACTUAL USE. THE ONLY WARRANTY MADE BY PROPEX FOR ITS PRODUCTS IS SET FORTH IN OUR PRODUCT DATA SHEETS FOR THE PRODUCT, OR SUCH OTHER WRITTEN WARRANTY AS MAY BE AGREED BY PROPEX AND INDIVIDUAL CUSTOMERS. **PROPEX SPECIFICALLY DISCLAIMS ALL OTHER WARRANTIES, EXPRESS OR IMPLIED, INCLUDING WITHOUT LIMITATION, WARRANTIES OF MERCHANTABILITY OR FITNESS FOR A PARTICULAR PURPOSE, OR ARISING FROM PROVISION OF SAMPLES, A COURSE OF DEALING OR USAGE OF TRADE.**

CS 513
©2006 Propex Concrete Systems Corp.
07/06